

### Key Features

#### Small Vertical Footprint

Towers are only 11.25" wide maximizing your work spaces.

#### Maintenance Free Cable Management

Perfected cable management provides quick device return and retrieval. Never waste time rewiring again.

#### Visual Security

The asymmetric door allows you to clearly see if all the devices are charging and stored from anywhere.

#### Antimicrobial Powder Coating

This gives an extra layer of protection against spreading common germs.

#### USB-A to USB-C Cords included with USB Towers

Cable up Towers in less than 10 minutes.

#### Grab&Go Option

Remove the door altogether for barrier-free device access in flexible environments.

#### Versatile

#### Mounting Options:

Place Tower on wall, Stand, or Roller. These Towers are designed to evolve with your deployment needs.



W 11.25"



**\$1,318.99 MSRP**

#### TECH SPECS – Model #: 1G080USB

8 shelf wall-mounted Tower, including a USB power strip with cord, 8 USB-A to USB-C cords, keyed locking door and TechStop. Charge time 5-7 hours.

#### TOWER DIMENSIONS:

H 37.25" x W 11.25" x D 20.00"

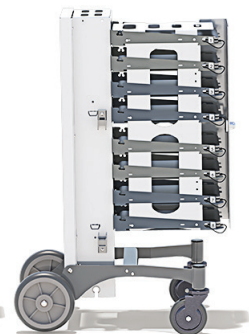
H 94.62cm x W 28.58cm x D 50.80cm

#### POWER SUPPLY:

100 - 250 VAC 50/60 Hz Output of 2.1A per port for sleep and charge. For devices with maximum power supply of 45W or less.

**CORD LENGTH:** 10' / 3.05m

**ASSEMBLED WEIGHT:** 31.00lb / 14.06kg



**Grab&GO 8** is an ideal choice for ANY business that manages a fleet of mobile devices or laptops:

#### Use Cases for Devices

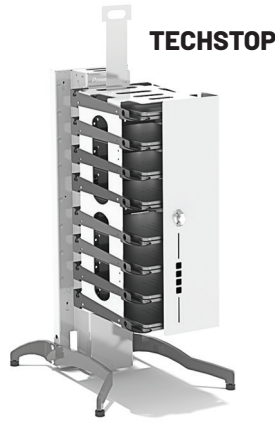
- ✓ Loaner Device Programs
- ✓ Waiting Rooms
- ✓ Waivers/Applications
- ✓ Training Rooms
- ✓ Sales Floor
- ✓ Warehousing
- ✓ Delivery
- ✓ Inventory

#### Industries Served

- ✓ Public Safety & Emergency Services
- ✓ Job & Career Centers
- ✓ Libraries & Museums
- ✓ VA or Children's Hospitals & Telehealth
- ✓ Dentists, Clinics, & Nursing Homes
- ✓ Hotels & Restaurants
- ✓ Government & Military/Defense
- ✓ IT Departments, Retail, & More

# Versatile and Future-proof Shelves

The adjustable TechStop keeps devices at the front of the shelf, making it easier to plug in or unplug devices during return or retrieval. Insert the TechStop into the appropriate slot for your device sizes, or remove all together for larger laptops.



**PLACEMENT OPTIONS FOR THE TECHSTOP**

**3** **REMOVAL OF TECHSTOP**  
for devices up to 14.75" / 37.47 cm

**2** **TECHSTOP IN SECOND SLOT**  
for devices up to 12.25" / 31.12 cm

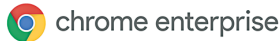
**1** **TECHSTOP IN FIRST SLOT**  
for devices up to 10.25" / 26.04 cm

**Maximum Device Length** 14.75" / 37.47 cm  
**Maximum Device Width** 10.0" / 25.4 cm

**Top Shelf Spacing:** 1.75" / 4.45cm      **Spacing on Other Shelves:** 3.25" / 8.25 cm



Remove door for barrier-free option, as featured by Google in their Grab & Go Program.



[Read about Google's Loaner Program](#)

## CUSTOM COLORS \$199 charge per Tower (minimum of 10 unit order)

**NOTE:** Stands and Rollers added to Tower models not available in custom colors.

1	2	3	4	5	6	7
*Yellow	*Blue	*Red	Orange	*DGrey	*White	Purple
8	9	W	X	Y	Z	
*Green	Navy	*LGrey	Silver	Gold	Black	

\*Antimicrobial colors available include Yellow, Blue, Red, DGrey, White, Green, LGrey



## STANDS AND ROLLERS

Stands and Rollers sold separately.

### STANDS

Attach any **Grab&Go 8** shelf Tower to make it free standing. Includes locking rear door and brackets to wrap cord.

#### STAND8

\$369.99 MSRP

Model #: 1S08002

H 38.25" x W 19.25" x D 22.70"

97.16 cm x 48.90 cm x 57.66 cm

### ROLLERS

Attach any **Grab&Go 8** shelf Tower to make it mobile. Includes locking front caster wheels, locking rear door and brackets to wrap cord.

#### ROLLER8

\$399.99 MSRP

Model #: 1R08001

H 40.25" x W 20.5" x D 30"

102.24 cm x 52.07 cm x 76.20 cm

